



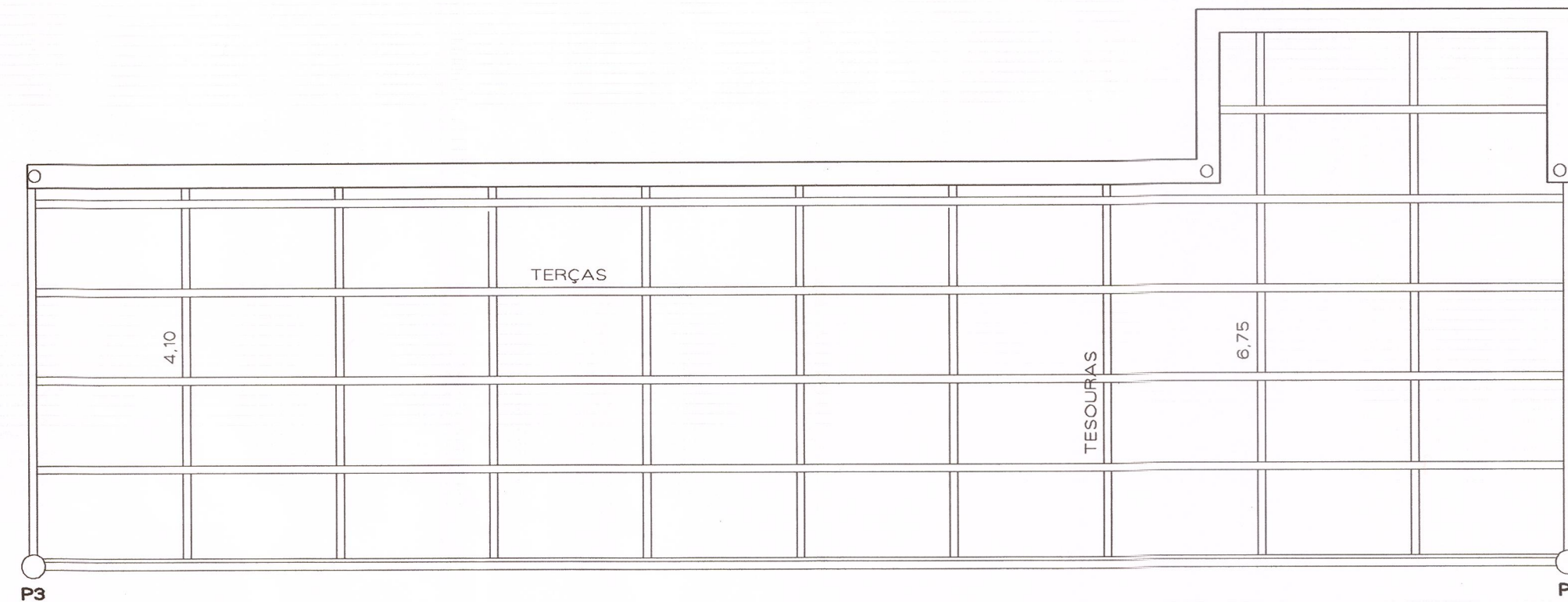
AIRTON - Desenho de Projetos  
airton\_machado@outlook.com.br  
Fone : (55) 9 9959 - 4571



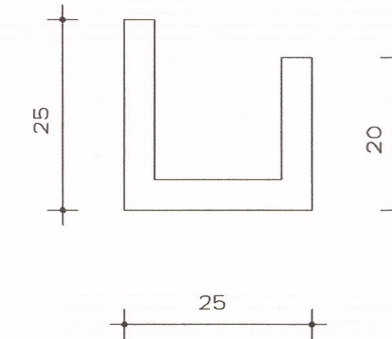
## REFORMA DA FACHADA DA UBS.

ENDEREÇO : SALDANHA MARINHO, 19 - BARRA DO QUARAI / RS

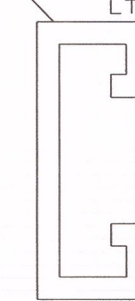
|                                   |  |                     |                   |  |
|-----------------------------------|--|---------------------|-------------------|--|
| PREFEITO MUNICIPAL                | IAD CHOLI  |                     |                   |  |
| SEC. DE SAÚDE                     | DANILO RODRIGUES                                   |                     |                   |  |
| SEC. OBRAS, TRANSPORTE E TRÂNSITO | JULIANO ALVES PAVANATTO                            |                     |                   |  |
| PROJETO EXECUÇÃO                  | CLAUDIO COVOLO.<br>ENGº. CIVIL - CREA / RS 008610. |                     |                   |  |
| ASSUNTO                           | ESTRUTURAL   |                     |                   |  |
| ESCALA INDICADAS                  | ÁREA<br>305,00m²                                   | DATA<br>SET. / 2019 | DESENHO<br>AIRTON |  |



### CHAPA GALV.

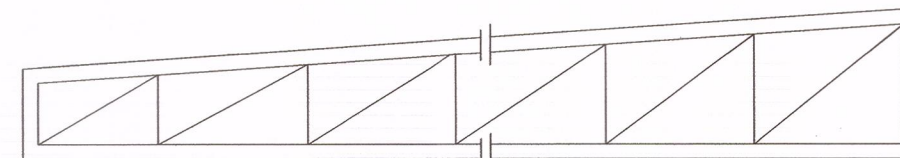


TERÇAS 40x20x15x100x40x20x15  
CH. 2,65mm  
LT = 156,00m



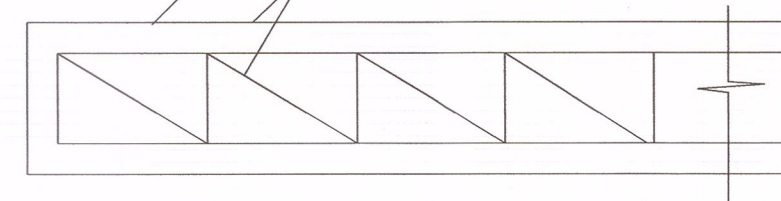
### TESOURAS

LT = 61,50m

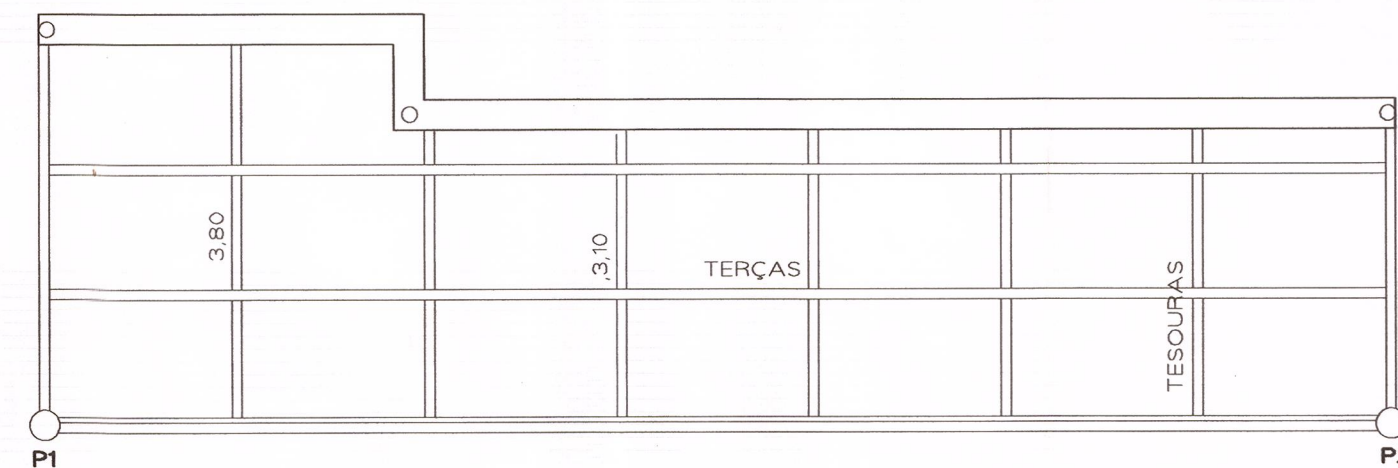


PERFIL - U - 50x127x50X30mm

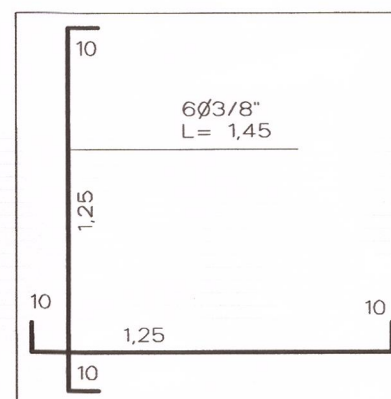
PERFIL - U - 50X120X50X2,65mm



LT = 48,85m  
VIHAS MET. SUPERIOR  
S/E

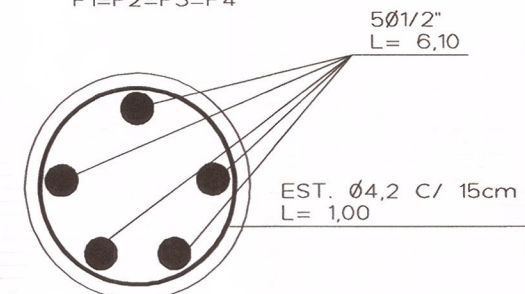


### SAPATAS.



### PILARES.

P1=P2=P3=P4



Ø0,30m  
FORMA FIXA  
CANO PVC Ø0,30m

TOTENS  
T1 E T2