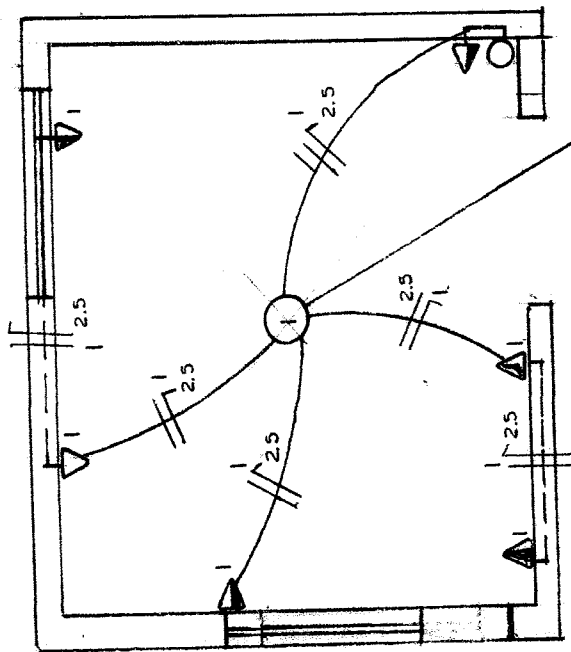
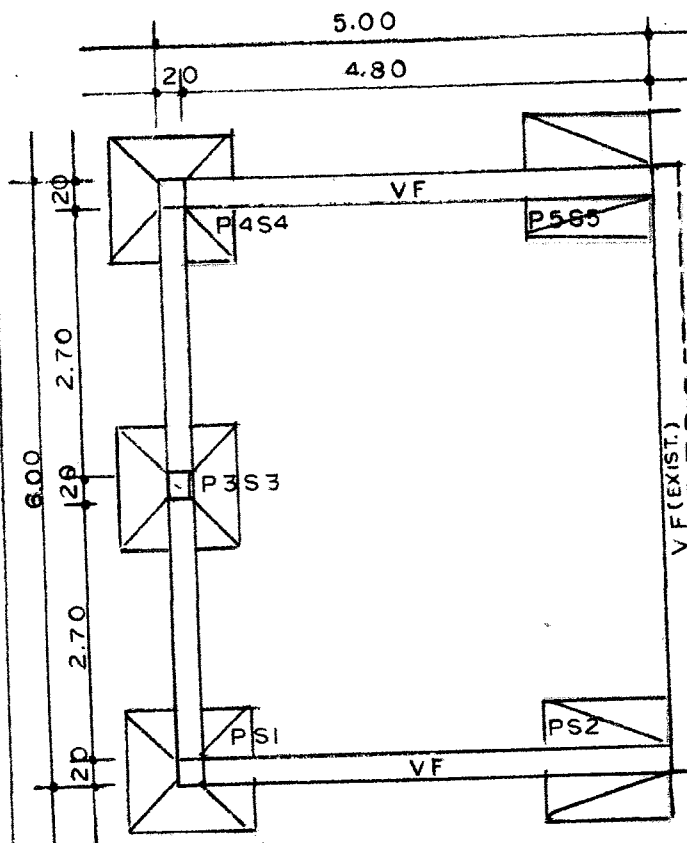


Rubrica



ELETRICO
 CARGA: 1.100 W
 DISJ. AUTOM.: 20A

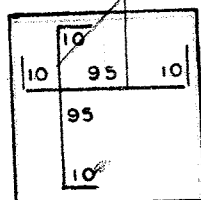


ESTRUTURAL

Alair Bica Gonçalves
 Secretário Municipal de Obras,
 Transportes e Trânsito
 Barra do Quaraí - RS

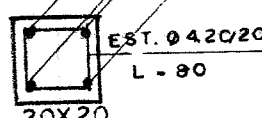
Claudio Covolo - Engº Civil
 CREA/RS 008610

SAPATAS
 $2 \times 6 \varnothing 3/8"$
 $L = 1.15$



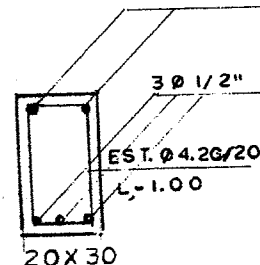
1.00X1.00X25
 S1 A S5

PILARES
 $4 \varnothing 3/8"$
 $L = 5.00$



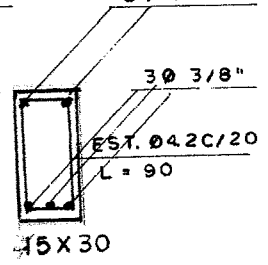
20X20
 P1...P5
 $L_T = 25.00$

VIGAS DE FUNDAÇÃO
 $2 \varnothing 1/4"$



20X30
 $VF = L_T = 16.00$

VIG. SUP.
 $2 \varnothing 1/4"$

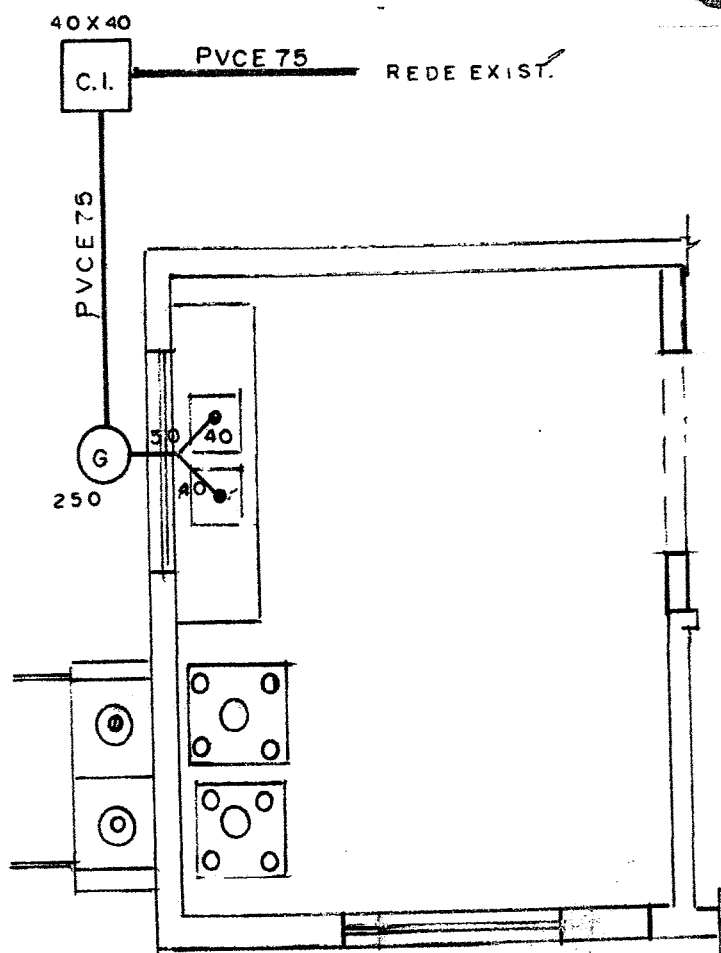
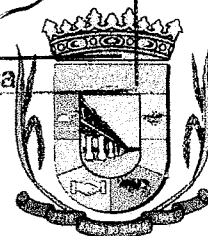


15X30
 $VS = L_T = 16.00$

Processo N° 1635
Fls. N° 12

3

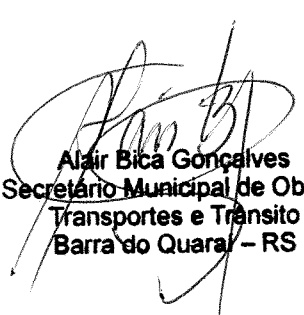
Rubrica




AGUA : REDE EXIST.

HIDROSSANITARIO

1 : 75


Alair Bica Gonçalves
Secretário Municipal de Obras,
Transportes e Trânsito
Barra do Quaraí - RS


Claudio Covolo - Eng° Civil
CREA/RS 008610